



In General



Reason for implementation of MIS at the University of Hradec Králové

- **University as a complicated organism of processes and data**
- **Different levels of competencies and authorities**
- **Human factor**



Data Collection



- **Decision-making roles in data access and responsibilities.**
- **Different levels of expertise in data analysis at different organizational levels.**
- **Communication of parts/departments within one institution can be lacking.**

Data Collection



- **Data Warehouse includes inputs from internal systems:**
 - STAG – student evidence
 - MAGION – economic information system
 - GAP – grants and projects evidence
 - ISKAM – accommodation system

Data Outputs Usage



- **The data is continuously collected, evaluated, and used by:**
 - UNIVERSITY MANAGEMENT
 - FINANCE OFFICE, HR, AND PAYROLL OFFICE
 - SCIENCE AND KNOWLEDGE TRANSFER OFFICE
 - UNIVERSITY HALLS OF RESIDENCE
 - STUDY AFFAIRS
 - INTERNATIONAL OFFICE

 - DATA PARTIALLY AVAILABLE FOR PUBLIC



MIS in Internationalization

Building the Structure



Following the Strategy of Internationalization.

- Reports of Internationalization

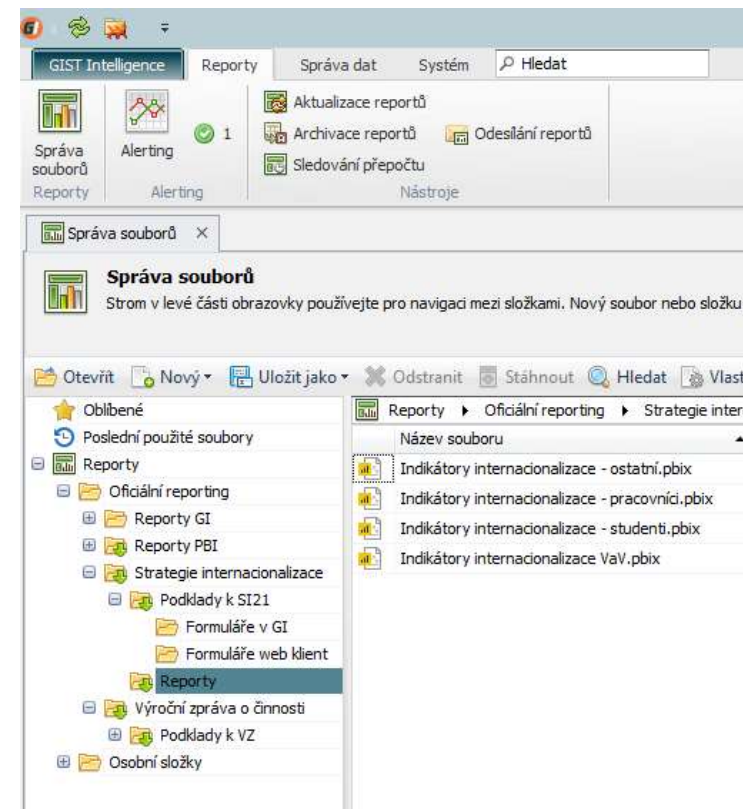
- STUDENTS
- STAFF
- OTHERS
- RESEARCH

- Data for Annual Reports

- MOBILITIES

- Inputs

- From other systems
- Manual input (rankings, ambassadors, strategic partners.....)



Student Indicators



- **15 indicators monitored currently:**
 - Number of incoming mobilities
 - Number of outgoing students
 - Number of participants of summer schools



Staff Indicators



- **10 indicators monitored currently:**
 - Detailed number of international staff at the UHK
 - Number of visiting professors
 - Number of outgoing staff mobilities



Options



- Possible to create my output.
- This output can be saved and later updated.





Challenges and Advantages

- Management support
- Communication with system administrators
- Communication with coordinators of internationalization
- Communication with supplier
- Resistance to changes

- Decision-making processes improved
- Easier accessibility and data accuracy
- Enhanced reporting capabilities

Thank you for your attention!

lenka.badinska@uhk.cz

