



Compulsory and Introductory Courses

Courses based mainly on methodology and key academic disciplines relevant to the study of the European political, social, cultural and economic space.

semester 1



Leiden Track and Krakow Track

This semester is also based on compulsory courses that cover different areas of EU studies. In addition, students can build their own structure for the semester.

semester 2



A Year of Self-Governed Expertise

During the two final semesters, students have a variety of choices of facultative courses that reflect the added value of each member of the consortium. During the two final semesters, students have a variety of choices of courses that reflect the added value of each member of the consortium, including internship. Beyond that, the programme offers a wide range of joint events (seminars, round tables, cultural events) in cooperation with a vast network of Associated Partners.

semester 3 & 4



4 Partner Universities

204 Alumni of the Programme

55 Home Countries of EPS Students

21 Associated Partners



Successful Implementation

- Consortium composition
- National rules and regulations
- Institutional commitment
- Personal dedication
- Jointness

Who We Are

EU Values
 EPS is a truly "European project" that demonstrates good working cooperation among partners from different EU countries. It shows partners from Southern/Western/Central and Eastern Europe that represent old and new member states are able to build a high quality project together.

Diversity and Inclusivity in EPS
 The EPS Diversity and Inclusivity Strategy covers three main areas: diversity in dissemination and admission, diversity and inclusivity in the EPS Curriculum and its implementation, and diversity and inclusivity in the running of Joint Events.

Václav Havel Legacy
 We reflect the importance and content of the legacy of the first post-communist president of the Czech Republic Václav Havel. The EPS Programme relates to Havel's idea of Europe that goes beyond just integration and places its EU-related courses into a broader European context.

Since 2017

EPS { European Politics and Society

4 Partner Universities 204 Alumni of the Programme 55 Home Countries of EPS Students 21 Associated Partners

What Impact We Make

Individual level
 With their in-depth knowledge and understanding of Europe, EPS Alumni are qualified to find employment in senior positions in which a strong intercultural and international component is needed, firstly in the public sector, as policy developers or in the diplomatic service, with international organisations and as policy advisors.

System level
 Internationalisation elements are very strong in EPS. They are mostly present in the cooperation with Academic Associated Partners. The partnerships are designed to cover multiple agendas in order to facilitate best practices and value sharing between the Consortium and its international partners. The Programme also generates considerable impact outside academia via events such as public lectures, roundtables and workshops.

Institutional level
 The Programme has been generating considerable impact at the faculty/university and departmental levels. First, it has enlarged, deepened and interconnected the existing academic networks of all Consortium members. Second, all academic actors continue to gain new skills and capabilities in research and teaching management. Third, the academic mobility of teaching staff helps to internationalise the academic corps at Partner Universities.

SCAN ME

Co-funded by the Erasmus+ Programme of the European Union



Jointness

Shared values

Student selection and services

Joint curriculum

Quality assurance

Joint diploma

Associated partners

Shared values

- Importance of shared values
- Promotion of the programme
- Interdisciplinarity



A Value Based Joint Degree



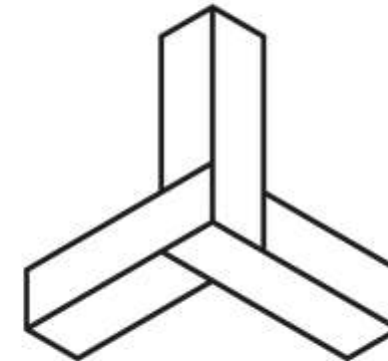
Václav Havel Legacy

The identity and values of the Programme reflect the importance and content of the legacy of the first post-communist president of the Czech Republic Václav Havel. The EPS Programme relates to Havel's idea of Europe that goes beyond just integration and places its EU-related courses into a broader European context.



EU Values

EPS is a truly "European project" that demonstrates good working cooperation among partners from different EU countries. It shows that partners from Southern/Western/Central and Eastern Europe that represent old and new member states are able to build a high quality project together.



Diversity in EPS

EPS has developed, in cooperation with the EPS Student council, a set of measures EPS Diversity Strategy. The Strategy covers three main areas: diversity in dissemination and admission, diversity in the EPS curriculum and diversity in extracurricular events all of which function to uphold and perfect the idea of Diversity.

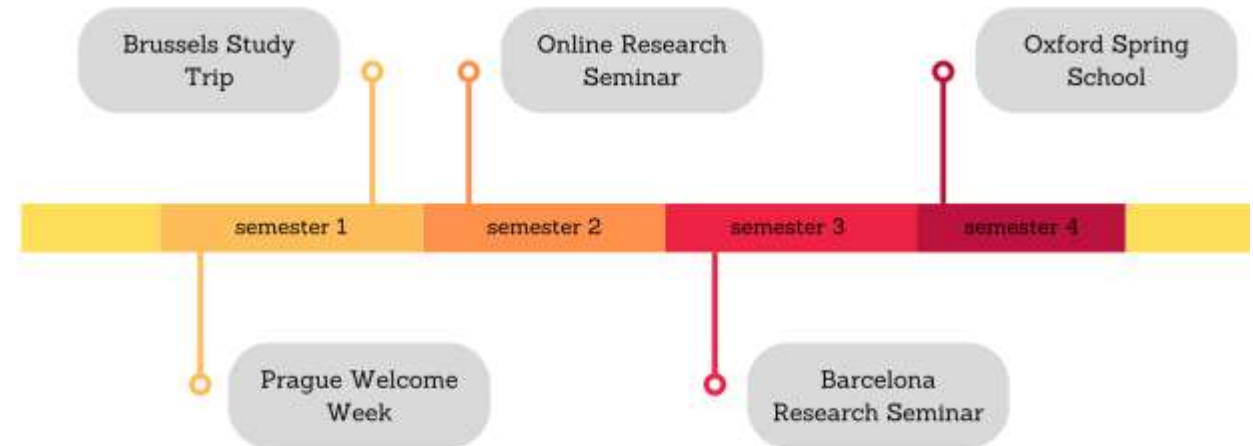
Student selection and services



Shared workload

- Joint selection procedure
- Student handbooks
- Communication tools
- Joint events
- Alumni

JOINT EVENTS TIMELINE



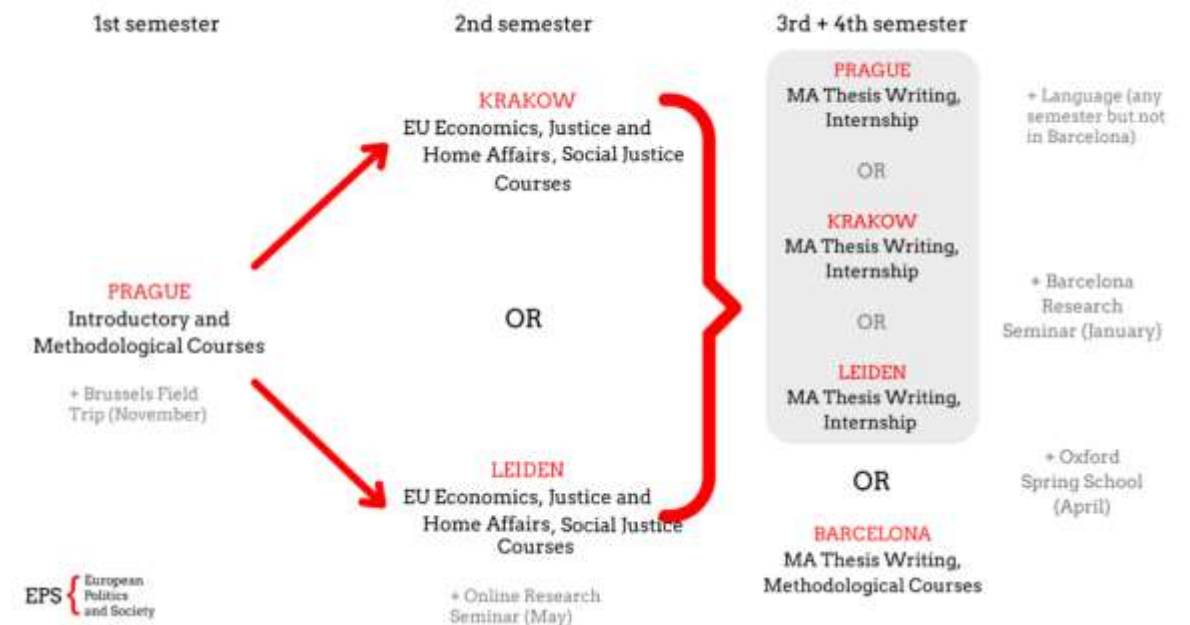
Joint curriculum



Learning and Teaching

- Defined learning outcomes
- Jointly taught courses
- MA thesis writing
- Joint defence
- Digital tools

Study Paths

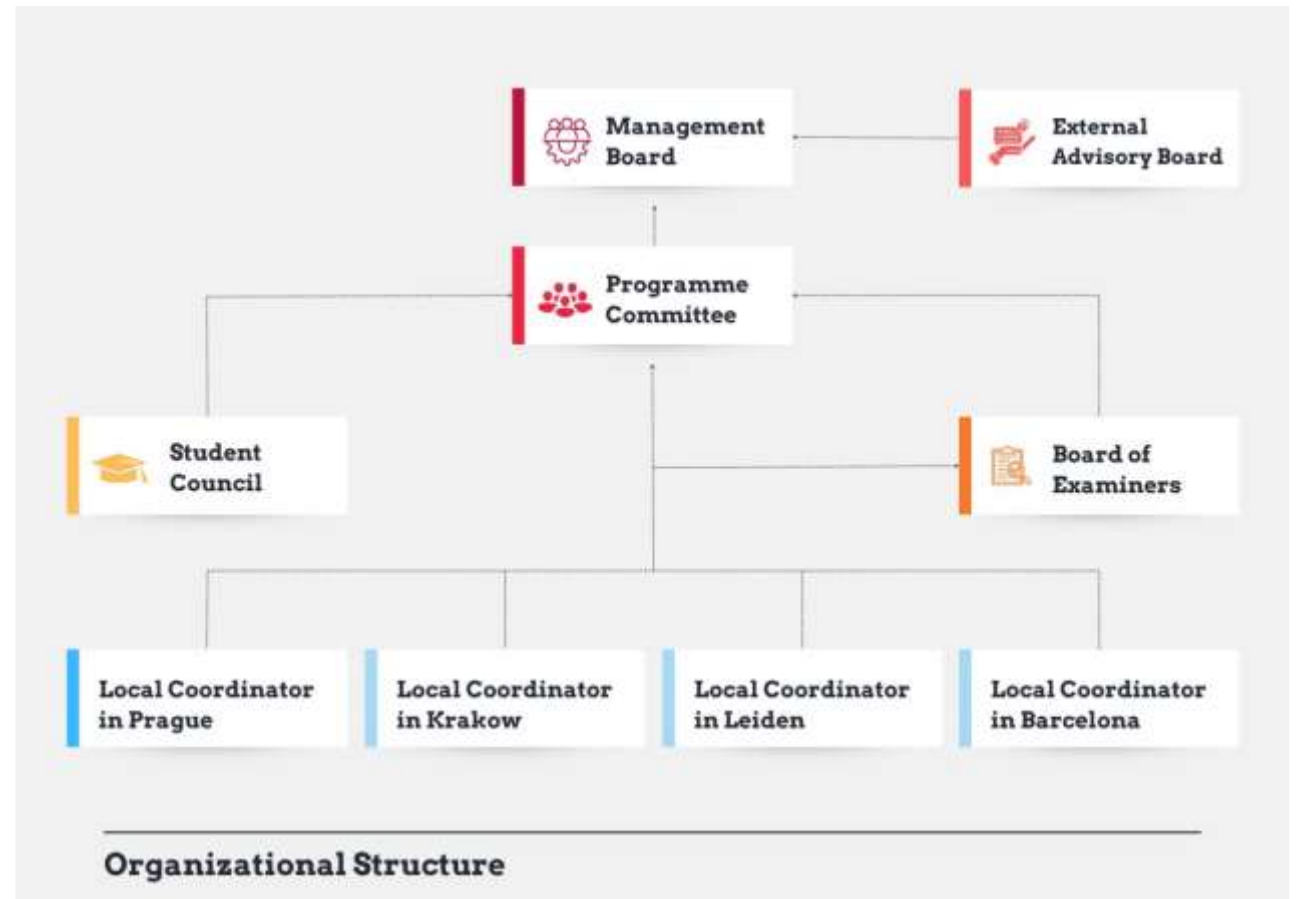


Quality Assurance



European Approach for QA

- European Approach since 2023 through Leiden
- Joint Programme Rules and Regulations
- Internal QA
- External QA
- Key role of BoE



Joint Diploma



UNIVERZITA KARLOVA

Česká republika

UNIVERSITEIT LEIDEN

Nederland

UNIVERSITAT POMPEU FABRA

Reino de España

V souladu s dohodou o konsorciu EPS společného magisterského studijního programu Erasmus Mundus Evropská politika a společnost společně potvrzují, že

In accordance with the EPS Consortium Agreement of the Erasmus Mundus Joint Master Degree European Politics and Society hereby jointly certify that

Karel Čtvrtý

narozen 5. 4. 1980 v Praze, Česká republika
absolvoval dne 25. 5. 2018 s vyznamenáním
vysokoškolské studium v navazujícím magisterském programu

born 5. 4. 1980 in Prague, Czech Republic
graduated on 25. 5. 2018 with distinction
in master's study programme

*Evropská společnost a politika:
Václav Havel Joint Master Programme*

*European Politics and Society:
Václav Havel Joint Master Programme*

podle zákona č. 111/1998 Sb. se jmenovanému
Tento diplom je předložen v souladu s ustanoveními nizozemského zákona o vysokých školách
a výzkumu (Nizozemsko)
zákon 11/1990 ze dne 18. června, o univerzitě Pompeu Fabra

according to Act No. 111/1998 Coll.
This degree certificate is presented in accordance with the stipulations of the Dutch Higher Education and
Research Act (the Netherlands)
Law 11/1990, of June 18, of the University of Pompeu Fabra

uděluje akademický titul

has been awarded with academic title

Magistr „Mgr.“ / Master of Arts “MA“ / Master „MA“

prof. MUDr. Tomáš Zimá, DrSc. MBA
Rektor / Rector
Univerzita Karlova



Dr. Maxine David
Statutory Representative
Universiteit Leiden



Universiteit Leiden



prof. Jaume Casals
Rektor / Rector
Universitat Pompeu Fabra



Co-funded by the
Erasmus+ Programme
of the European Union



Číslo diplomu/Diploma No.:DL1120180000

Associated Partners



Intensive cooperation

- 8 non-EU academic partners
- 15 EU non-academic partners
- Internships
- Research cooperation
- Mobility
- Student outreach

Global outreach



Opportunities



- Increasing prestige
- Cooperation with new partners
- Institutional spill-over effects
- Attracting excellent students from all the World
- Funding for developing new learning tools
- Mobility possibilities
- Building alumni network

Challenges



- Different national legal and university systems
- Visa related issues
- Not full institutional commitment
- Different academic practices
- Force majeure (pandemic, geopolitics)
- Student issues (mental health, accommodation)



Conclusion

**Despite all of this,
it's worth to do it!**