

Wednesday, November 22

Large 1

14:00 – 14:40

ERASMUS PICKER – The Right Way to Your Dream Destination for Studying Abroad?

Gabriela Böhmová, Prague University of Economics and Business

Dominika Hrabalová, Prague University of Economics and Business

STUDY ABROAD AT VSE



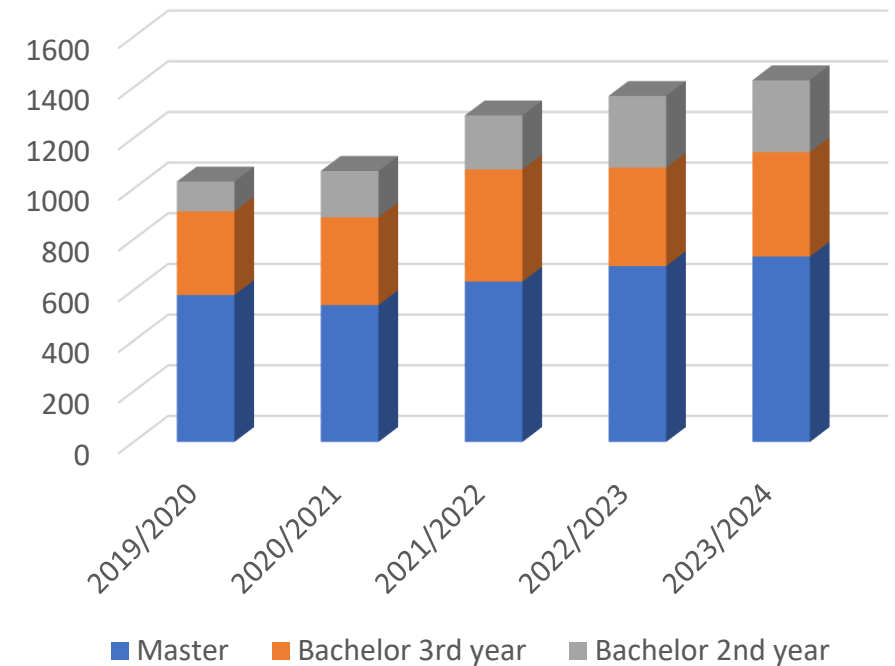
Centralized selection process

Stable interest in studying abroad

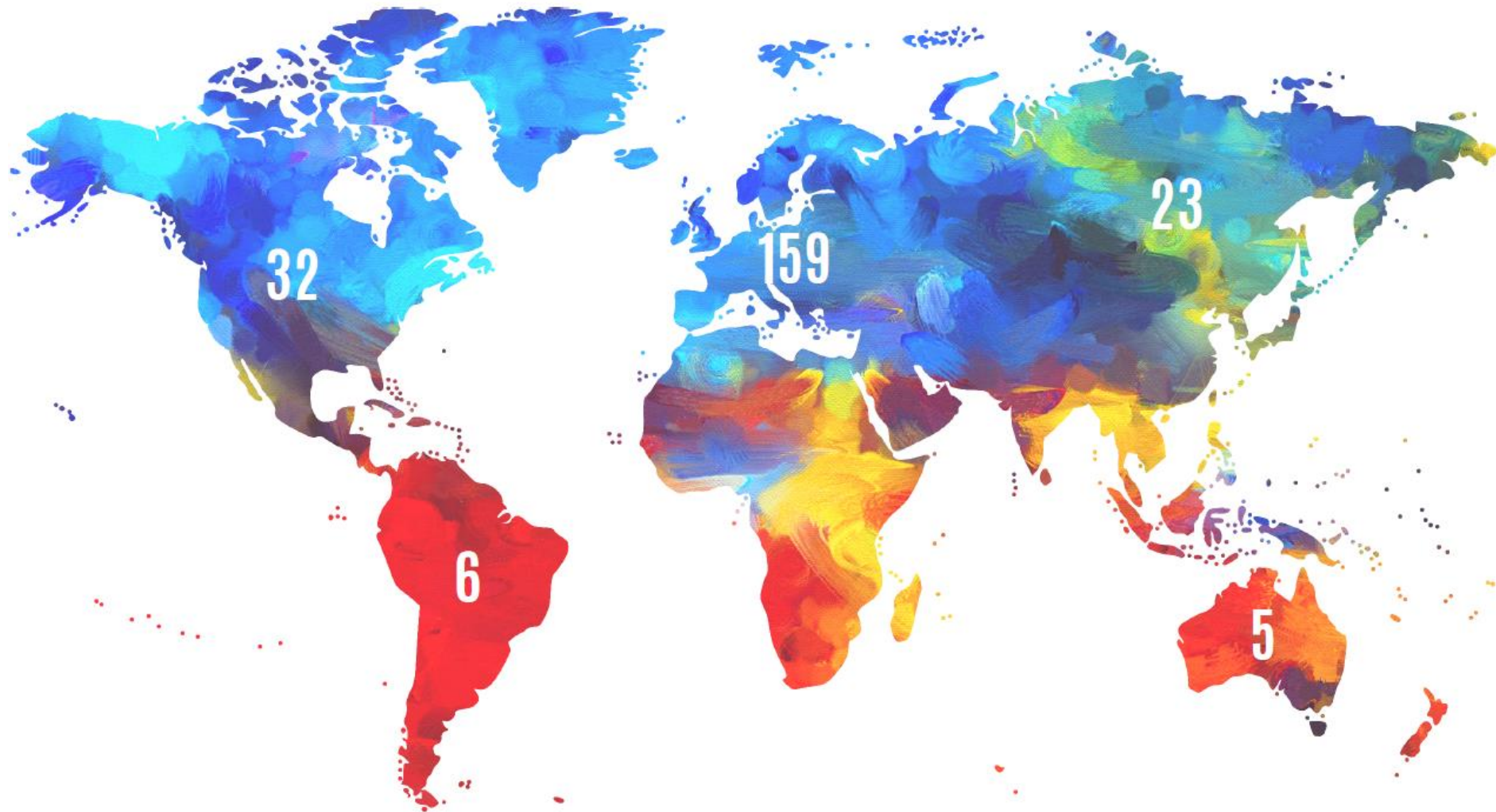
Focus on digitalization of all processes

Broad partner universities net (230+)

VSE – number of applications for study abroad



VSE PARTNER UNIVERSITIES



SELECTION OF STUDY ABROAD DESTINATION



Printed Brochure of Study Abroad Options



Rozpě míst pro semestrální výměnné pobyty (bakalářské)

Studijní jazyk ANGLIČTINA				
Partnerská/ hostitelská škola (s případným upřesněním kampusu/fakulty/školy/katedry/ programu)	Na partnerské škole lze studovat předměty zejména (ale nejen) z oblasti	Místa (1 místo = 1 semestr)	střídá semestr od-do letní semestr od-do	Poznámky a doporučení
BELGIE				
Hogeschool-Universiteit Brussel (HUB) Academic Education Division / Faculty of Economics and Management Brussel http://www.hubussel.be/HUB_english/HUB_web/HUB-English/Study-at-HUBussel/International_Exchange/Mobility-Office-Academic-Division.html	Economics, ICT, Business Information Mgmt., Commercial Engineering, Business Admin., Management, International Business/Economics	2	září - leden únor - červen	Možno si vybrat EILC* (nizozeměna)
FRANCIE				
EDHEC Business School Lille - Nice Business Management track (Campus Lille) nebo Financial Economics Track (Campus Nice) http://www.edhec.edu + istrand pro výměnné studenty	Lille: Business Management Track (Business Administration - obecné předměty) Nice: Financial Economic Track (specialization in Finance - více odbornějších předmětů)	2	září - prosinec leden - duben/květen	Volíte kampus a 1 program
ESC Rennes School of Business Grande Ecole / Undergraduate Transfer Credit Programme Rennes http://www.esc-rennes.fr/exchange-students	Auditing+ Accounting, Finance+ Operations, HR, International Business, Management+ Organisation, Marketing, Negotiation, Sales, Strategy	4	září - prosinec leden - duben	
Euromed Management Marseille http://www.euromed-management.com/en	Business Administration, Management, Marketing	4	září - prosinec leden - květen	Volíte předměty z Case/led Programme
Daší možnosti studia ve Francii naleznete v oddíle Studijní jazyk FRANCOUZŠTINA				
NĚMECKO				
Hochschule für Wirtschaft und Recht Berlin Faculty of Business and Economics Berlin http://www.hwr-berlin.de/en/study-at-hwr-berlin/exchange-students/schooneberg-campus/	Business Administration, Finance, International Marketing Management, Economics	2	říjen - únor březen - červenec	
Daší možnosti studia ve Německu naleznete v oddíle Studijní jazyk NĚMČINA				
NIZOZEEMI				
Hogeschool Leiden University of Applied Sciences Leiden http://www.hsleiden.nl/exchange-students	European and International Law, International Business	2	září - únor únor - červenec	Možno si vybrat EILC* (nizozeměna)

SELECTION OF STUDY ABROAD DESTINATION



SharePoint

Prehled List školy Stínované ... Najít položku ULOŽIT TOTO ZOBRAZENÍ

Country	Language	Partner university (in some cases the faculty/school is indicated)	City	Courses mainly in following areas	Spots	Spring term from - till	Special language requirement	Other special requirements
Language : DE (4)								
Germany	DE	Hochschule Zittau-Görlitz / Faculty of Managerial and Cultural Sciences / Faculty of Business Administration and Engineering	... Campus Zittau, Campus Görlitz	Arts Management, Business Administration, Management, Tourism	1	Apr - Jul		
Germany	DE	RWTH Aachen University /School of Business and Economics	... Aachen	Business Administration, Management, Marketing	2	Apr - Aug		
Germany	DE	Technische Universität Dresden	... Dresden	Accounting, Business, Economics, IT, Management, Marketing	4	Apr - Jul		
Germany	DE	Universität Passau /Faculty of Business Administration and Economics	... Passau	Accounting, Business Administration, Finance	3	Mar - Jul		
Language : EN (87)								
Finland	EN	Aalto University School of Business, Mikkeli Campus	... Mikkeli	Economics, International Business, Management	2	Sep - Dec		Required study results: 1,00 - 2,20.
Austria	EN	Johannes Kepler Universität Linz / Faculty of Business, Economics and Social Sciences	... Linz	Business, Economics, Political Science, Management	1	Feb - Jun		
Austria	EN	Management Center Innsbruck (MCI)	... Innsbruck	Entrepreneurship, Business, International Business, Communication, Law, Management, Tourism	4	Mar - Jun	All incoming exchange students are required to take an online English test during the application process. The test will be provided by MCI.	
Austria	EN	Wirtschaftsuniversität Wien (Vienna University of Economics and Business)	... Vienna	Business, Economics, International Business, Finance and Accounting, Marketing, Management, Entrepreneurship	2	Mar - Jun		Required study results: 1,00 - 2,20.
Austria	EN	Wirtschaftsuniversität Wien (Vienna University of Economics and Business)	... Vienna	Accounting, Business, Economics, Entrepreneurship, Finance, International Business, IT, Law, Management, Marketing	0	Mar - Jun		Required study results: 1,00 - 2,20.
Azerbaijan	EN	ADA University	... Baku	Business Administration, Economics, IT, International Business	2	Jan - May		Required study results: 1,00 - 2,20.
Canada	EN	Queen's University /Stephen J.R. Smith School of Business / Undergraduate	... Kingston (Ontario)	Accounting, Business, Communication, Economics, Finance, International Business, IT, Management, Marketing, Ethics	1	Jan - Apr	Required language level C1 according to CEFR.	
Denmark	EN	Copenhagen Business School (CBS)	... Copenhagen-Frederiksberg	Business, Communication, Economics, Entrepreneurship, Finance, International Business, IT, Law, Logistics, Management	3	Jan - Jun	TOEFL (iBT): 91 / IELTS: 7 / CAE: Pass / CPE: Pass	Required study results: 1,00 - 2,20.

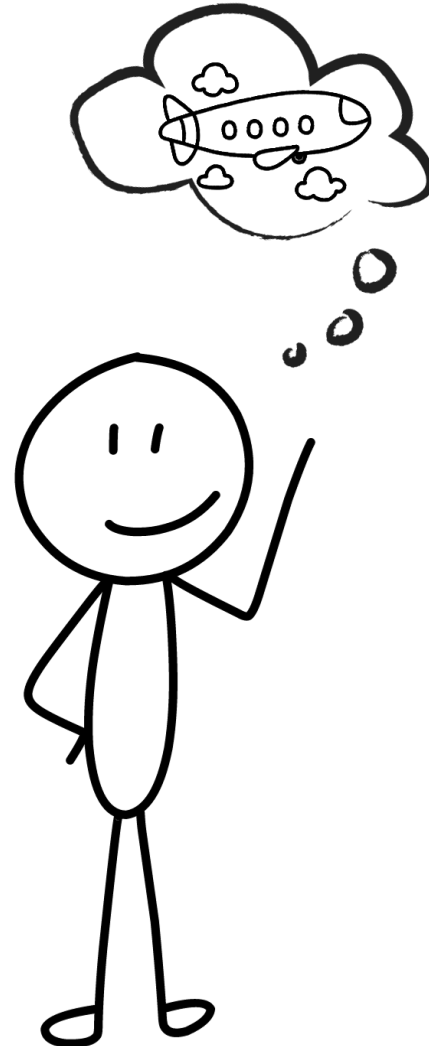
Partner university (in some cases the faculty/school is indicated)	Copenhagen Business School (CBS)
Language	EN
Country	Denmark
City	Copenhagen-Frederiksberg
City Numbeo	Frederiksberg
Courses mainly in following areas	Business, Communication, Economics, Entrepreneurship, Finance, International Business, IT, Law, Logistics, Management, Marketing
Courses mainly in following areas V2	Business; Communication; Economics; Entrepreneurship; Finance; International Business; IT; Law; Logistics; Management; Marketing
Spots	3
Spring term from - till	Jan - Jun
Spring semester from	Jan
Spring semester till	Jun
Fall semester from	X
Fall semester till	X
Special language requirement	TOEFL (iBT): 91 / IELTS: 7 / CAE: Pass / CPE: Pass
Other special requirements	Required study results: 1,00 - 2,20.
Web sites	<ul style="list-style-type: none"> Exchange students
Additional Information on Courses	<ul style="list-style-type: none"> Undergraduate courses for exchange students Students are required to study 30ECTS per semester.
VŠE scholarship	600 EUR/month
Cost of living	https://www.expatistan.com/cost-of-living/index/europe
Nomination Deadline	15.10.
Application Deadline	late October
Comments	
Final Reports from previous students (InSIS)	Final Report available in InSIS(Dohoda/Agreement: Erasmus+ Campus Prague or Erasmus/LLP)

STUDENT PROJECT

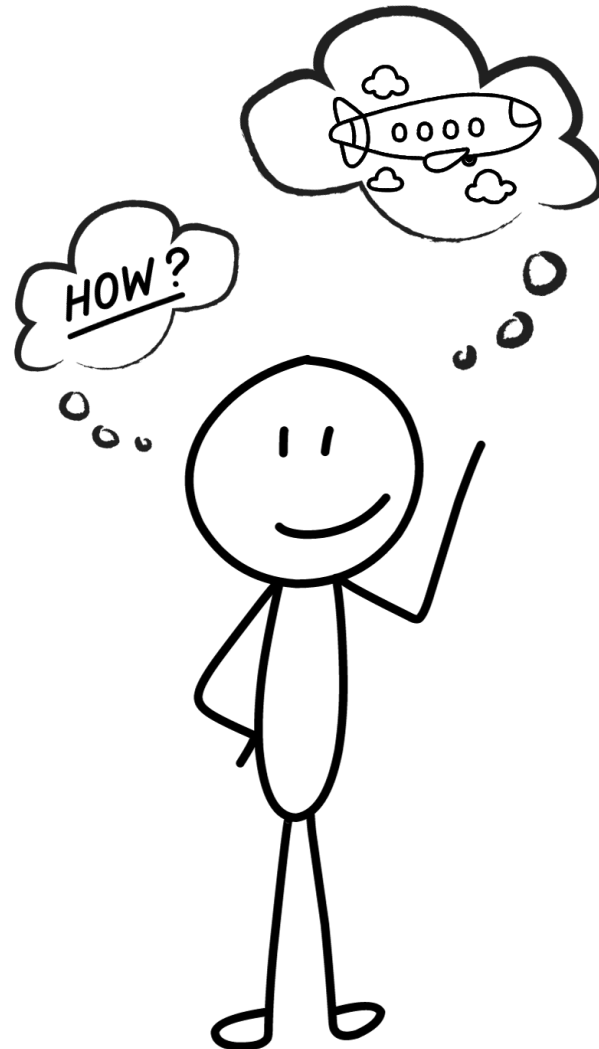


from students to students

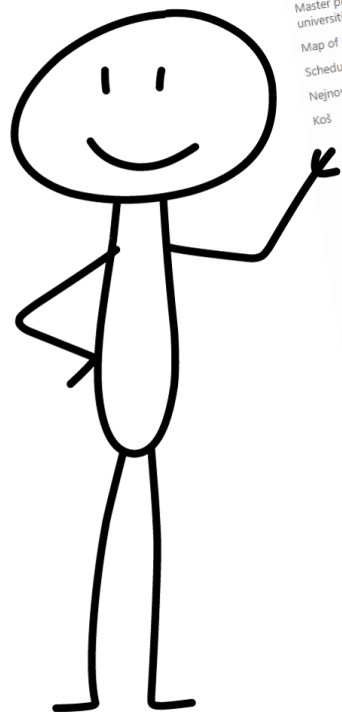
SELECTION OF STUDY ABROAD DESTINATION



SELECTION OF STUDY ABROAD DESTINATION



SELECTION OF STUDY ABROAD DESTINATION



Oddělení Bachelor programme (2nd year) - list of universities

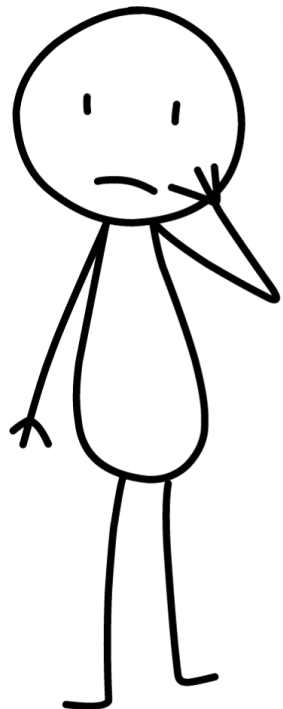
Country Language Partner university (in some cases the faculty/school is indicated) City Courses mainly in following areas Spots Spring term from - till Special language requirement Other special requirements

Exchange Possibilities
 Bachelor programme (2nd year) - list of universities
 Bachelor programme (3rd/4th year) - list of universities
 Master programme - list of universities
 Map of partner universities
 Schedule
 Nejnovější
 Koš

► Language: DE (4)
 ► Language: EN (87)

Country	Language	Partner university (in some cases the faculty/school is indicated)	City	Courses mainly in following areas	Spots	Spring term from - till	Special language requirement	Other special requirements
Finland	EN	Aalto University School of Business, Mikkeli Campus	Mikkeli	Economics, International Business, Management	2	Sep - Dec		
Austria	EN	Johannes Kepler Universität Linz / Faculty of Business, Economics and Social Sciences	Linz	Business, Economics, Political Science, Management	1	Feb - Jun		Required study results: 1,00 - 2,20.
Austria	EN	Management Center Innsbruck (MCI)	Innsbruck	Entrepreneurship, Business, International Business, Communication, Law, Management, Tourism	4	Mar - Jun		Required study results: 1,00 - 2,20.
Austria	EN	Wirtschaftsuniversität Wien (Vienna University of Economics and Business)	Vienna	Business, Economics, International Business, Finance and Accounting, Marketing, Management, Entrepreneurship	2	Mar - Jun		Required study results: 1,00 - 2,20.
Austria	EN	Wirtschaftsuniversität Wien (Vienna University of Economics and Business)	Vienna	Accounting, Business, Economics, Entrepreneurship, Finance, International Business, IT, Law, Management, Marketing	0	Mar - Jun		
Austria	EN	Wirtschaftsuniversität Wien (Vienna University of Economics and Business)	Vienna	Business Administration, Economics, IT, International Business	2	Jan - May	Required language level C1 according to CEFR.	Required study results: 1,00 - 2,20.
Azerbaijan	EN	ADA University	Baku	Accounting, Business, Communication, Economics, Finance, International Business, IT, Management, Marketing, Ethics	1	Jan - Apr	TOEFL (iBT): 91 / IELTS: 7 / CAE: Pass / CPE: Pass	
Canada	EN	Queen's University / Stephen J.R. Smith School of Business / Undergraduate	Kingston (Ontario)	Business, Communication, Economics, Entrepreneurship, Finance, International Business, IT, Law, Logistics, Management, Marketing	3	Jan - Jun	Required language level C1 according to CEFR.	
Denmark	EN	Copenhagen Business School (CBS)	Copenhagen-Frederiksberg	Business, Communication, Economics, Entrepreneurship, Finance, International Business, IT, Law, Logistics, Management, Marketing	1	Feb - Jun		
Denmark	EN	Syddansk Universitet (University of Southern Denmark) / Faculty of Business and Social Sciences	Campus Odense	Business, Business Administration, Management	1	Feb - Jun		

SELECTION OF STUDY ABROAD DESTINATION



Oddělení Bachelor programme (2nd year) - list of universities

Country Language Partner university (in some cases the faculty/school is indicated) City

Language: DE (4)

Language: EN (87)

Country	Language	Partner university (in some cases the faculty/school is indicated)	City
Finland	EN	Aalto University School of Business, Mikkeli Campus	Mikkeli
Austria	EN	Johannes Kepler Universität Linz / Faculty of Business, Economics and Social Sciences	Linz
Austria	EN	Management Center Innsbruck (MCI)	Innsbruck
Austria	EN	Wirtschaftsuniversität Wien (Vienna University of Economics and Business)	Vienna
Austria	EN	Wirtschaftsuniversität Wien (Vienna University of Economics and Business)	Vienna
Azerbaijan	EN	ADA University	Baku
Canada	EN	Queen's University / Stephen J.R. Smith School of Business / Undergraduate	Kingston (Ontario)
Denmark	EN	Copenhagen Business School (CBS)	Copenhagen-Frederiksberg
Denmark	EN	Syddansk Universitet (University of Southern Denmark) / Faculty of Business and Social Sciences	Campus Odense

Evaluation of the abroad placement

1. Basic Data

Language of study:
Study program:
Main source of financial support:
Other, which? Please specify:

2. Information and Administrative Issues before Departure

How did you learn about the possibility of spending a part of your VSE studies abroad? (e.g. through the International Office, per internet, from friends):
Why did you decide to apply for a place at the host institution where you finally spent your stay?:
How did you get information about this school?:
How were you getting information for students nominated to study at this school? (e.g. e-mails from the International Office of the host school, internet/intranet, welcome package sent per post):
Please describe briefly what the host institution did require you to do before departure (e.g. fill in an on-line or paper application form, send some documents per post or e-mail, any very special requirements):

3. Housing

When did you make your accommodation arrangements? (before departure, after arrival, how long prior to departure):
Does the host institution offer the possibility of staying in its dormitories/students' residences?:
the host institution or a student organization offer help with finding other types of accommodation?:
If yes, please indicate the name of the department, organization, contact person.:
Please describe briefly what kind of help do they offer (e.g. providing a list of flats/rooms for rent, giving the possibility of placing and advertisement):
If not, whom/what organization(s) can you ask for help?:
What type of accommodation(s) can you personally use?:
Please specify if necessary:
Who helped you personally to find accommodation?:
In your opinion, finding accommodation was (1 easy, 5 difficult):
Why did you decide for this type of accommodation?:
What equipment was at your disposal in your room/flat/dorm?:
Please indicate the monthly price of your type of accommodation. If you have information about prices of other types of accommodation, please mention them as well.:

Other special requirements

→ study results: 1,00 - 2,20.

Angličtina
MPG!
grant funds, the so called other resources

internet

kvůli kvalitnímu studijnímu programu na FGV
internet

e-maily ze zahraničního oddělení přijímací školy
kopii pasu a víza

dva a půl měsíce před příjezdem
not

yes

zahraniční oddělení přijímací školy
pošle odkaz na stránky s ubytováním

rented accommodation

nikdo

4

chtěla jsem ubytování blízko školy a za přijatelnou cenu
ubytování se nacházelo 3 minuty chůze od školy
vše potřebné
9000Kč/1000\$R

SELECTION OF STUDY ABROAD DESTINATION



Oddělení Bachelor programme (2nd year) - list of universities

Country Language Partner university (in some cases the faculty/school is indicated) City

Language: DE (4)

Country: ... of Business, Mikkeli ... Mikkeli

Courses mainly in following areas: Economics, International Management Business, Economics, ...

Exchange Possibilities

- Bachelor programme (2nd year) - list of universities
- Bachelor programme (3rd/4th year) - list of universities
- Master programme - list of universities
- Map of partner universities
- Schedule
- Nejnovější koš

General Conditions

- The exchange programme arranged by VSE is based on an exchange quota with VSE partner universities.
- Students must be enrolled in a full-time study at VSE for the whole duration of the application period, for the period between the application period and the departure, and for the whole duration of study abroad. Therefore, it is impossible to interrupt your study at VSE and take part in the exchange programme at the same time.
- Students, who have finished their study at VSE, and/or who have passed all the state exams, and/or who have passed all the state exams except for the Bachelor/Master Thesis Defence, cannot go on an exchange.
 - Due to technical and organizational reasons, it is not recommended to go on exchange during the semester in which the student wants to finish his/her study at VSE.
- The exchange programme cannot take place in the 1st year of a bachelor study and in the 1st semester of a master study.
- Applicants who graduated from another institution than VSE must have successfully completed at least one semester of study at VSE by the time of the application period.
- Prior to the departure, students must have a sufficient amount of registration coupons for a full recognition of their study abroad – ideally 30 ECTS (includes credits for the exchange only), as well as for the completion of all their study duties at VSE.
- Students cannot apply for a study abroad in a country whose citizenship they have, or where they permanently reside (data in IN SIS are taken into account).
- Students can apply in maximum of two different languages.
- In the application form, students can have as many universities as they like (starting with their most preferred, ending with the least).
- The selection of a preferred semester is not binding, it is not taken into account during the application period and can be changed afterwards.
- The minimum number of points that applicants need to achieve is not set in advance. This number depends on the number of points that other applicants achieve in the actual application round (spots at partner universities are firstly allocated to applicants with the highest number of points, then stepwise to applicants with lower number of points).

Evaluation of the abroad placement

1. Basic Data

Language of study:
Study program:
Main source of financial support:
Other, which? Please specify:

2. Information and Administrative Issues before Departure

How did you learn about the possibility of spending a part of your VSE studies abroad? (e.g. through the International Office)

Why did you decide to apply for an exchange?

How did you spend your stay?

Other special requirements

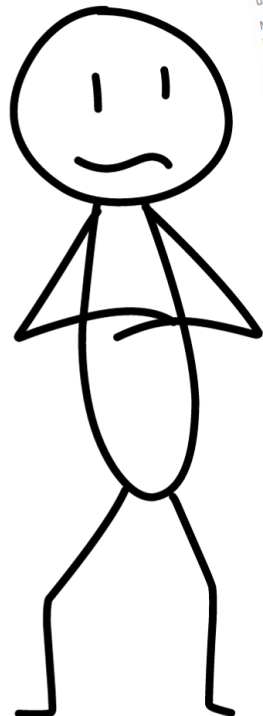
→ study results: 1,00 - 2,20.

Angličtina
MPG!
grant funds, the so called other resources

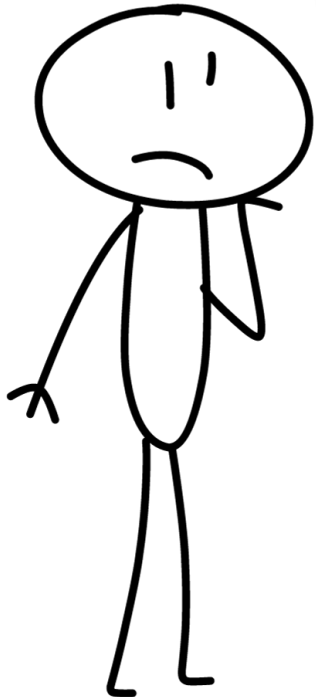
internet
kvůli kvalitnímu studijnímu programu na FGV
internet
e-maily ze zahraničního oddělení přijímací školy
kopii pasu a víza

two months before departure,
not
types
of
rented accommodation

never
4
I wanted to be accommodated near the school and at a reasonable price
accommodation was reached 3 minutes walk from the school
9000Kč/1000\$R



SELECTION OF STUDY ABROAD DESTINATION



Oddělení Bachelor programme (2nd year) - list of universities

Exchange Possibilities

- Bachelor programme (2nd year) - list of universities
- Bachelor programme (3rd/4th year) - list of universities
- Master programme - list of universities
- Map of partner universities
- Schedule
- Nejnovější
- Koš

Country Language Partner university (in some cases)

Language: DE (4)

General Conditions

- The exchange programme arrangements
- Students must be enrolled in a **application period** and the **departure** of the exchange programme
- Students, who have **finished their studies** at the partner university, can apply for the exchange programme except for the Bachelor/Master Thesis
 - Due to technical and organizational reasons, students who want to finish his/her studies at the partner university can apply for the exchange programme
- The exchange programme **cannot** be applied for by students who have **graduated from a partner university** at the time of the application period.
- Prior to the departure, students must have completed at least 30 ECTS (includes credits for the exchange programme)
- Students cannot apply for a study abroad programme if a student taken into account).
- Students can apply in maximum of 3 partner universities
- In the application form, students can specify their preferred semester
- The selection of a preferred semester is not possible afterwards.
- The **minimum number of points** that applicants need to achieve is not set in advance. This number depends on the number of points that other applicants achieve in the actual application round (spots at partner universities are firstly allocated to applicants with the highest number of points, then stepwise to applicants with lower number of points).

List of prices in Zurich
Current as of Nov 2023.

Change the currency:

CHF - CHF (Franc)

Exchange rate: 25.421 CZK / CHF

← Change back to show only in CHF (Franc)

Food	Update prices	
	CHF	CZK
Basic lunchtime menu (including a drink) in the business district	CHF 26	(656 Kč)
Combo meal in fast food restaurant (big mac meal or similar)	CHF 16	(414 Kč)
500 gr (1 lb.) of boneless chicken breast	CHF 14	(359 Kč)
1 liter (1 qt.) of whole fat milk	CHF 1.67	(43 Kč)

Evaluation of the abroad placement

1. Basic Data

Language of study:
Study program:
Main source of funding:

Other special requirements

Expected study results: 1,00 - 2,20.

Angličtina
MPG!

grant funds, the so called other resources

Departure

for VSE studies
friends):
before you finally

internet

at this
time

internet

before

kvůli kvalitnímu studijnímu programu na FGV
e-maily ze zahraničního oddělení přijímací školy
kopii pasu a víza

ture,

dva a půl měsíce před příjezdem
not

pes

yes

zahraniční oddělení přijímací školy
pošle odkaz na stránky s ubytováním

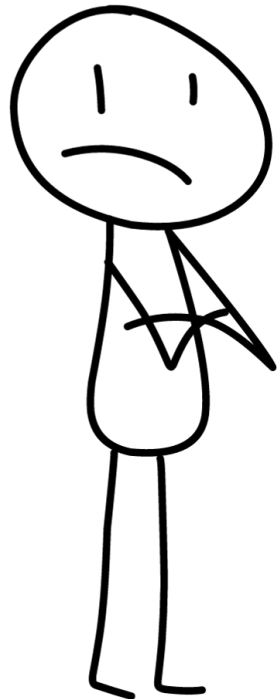
rented accommodation

nikdo

chtěla jsem ubytování blízko školy a za přijatelnou cenu
ubytování se nacházelo 3 minuty chůze od školy
vše potřebné

1000Kč/1000\$R

SELECTION OF STUDY ABROAD DESTINATION



Oddělení Bachelor programme (2nd year) - list of universities

- Exchange Possibilities
- Bachelor programme (2nd year) - list of universities
- Bachelor programme (3rd/4th year) - list of universities
- Master programme - list of universities
- Map of partner universities
- Schedule
- Nejnovější koš

General Con

- The exchange program
- Students must be in the application period of VSE and take part in the selection process
- Students who are not in the application period, except for the following reasons:
 - Due to illness
 - Due to other reasons
- The exchange program is organized by the Faculty of Education, VSE
- Applicants must submit an application form by the deadline
- Prior to the selection process, applicants must submit a 30€ fee
- Students can apply for a preferred semester afterwards
- The minimum number of points that applicants need to be considered for selection is the number of points that other applicants achieve in the actual application round (spots are filled by applicants with the highest number of points, then stepwise to applicants with lower number of points)

NUMBEO

Cost Of Living - Property Prices - Quality Of Life - Premium

Health Care > Index by City (Current)

Current Health Care Index

These data are updated continuously. For historical indices, published periodically, please visit Health Care Index 2023 Mid-Year.

Select Region: Africa America Asia Europe Oceania

Select display column: --All columns--

Rank	City	Health Care Index	Health Care Exp. Index
1	Taipei, Taiwan	86.4	159.0
2	Chiang Mai, Thailand	84.8	155.5
3	Seoul, South Korea	82.9	151.9
4	Rotterdam, Netherlands	81.5	149.6
5	The Hague (Den Haag), Netherlands	80.3	146.8
6	Madrid, Spain	79.8	147.7
7	Valencia, Spain	79.8	147.2
8	Porto, Portugal	79.4	145.5

Evaluation of the abroad placement

1. Basic Data

Language of study:
Study program:
Main source of funding:

List of prices in Zurich
as of Nov 2023.

Other special requirements

→ study results: 1,00 - 2,20.

Angličtina
MPG!
grant funds, the so called other resources

Departure

for VSE studies
friends):
ere you finally

internet

kvůli kvalitnímu studijnímu programu na FGV

internet

at this
l.

e-mailly ze zahraničního oddělení přijímací školy

before

kopii pasu a víza

ture,

dva a půl měsíce před příjezdem

not

pes

yes

zahraniční oddělení přijímací školy

pošle odkaz na stránky s ubytováním

rented accommodation

nikdo

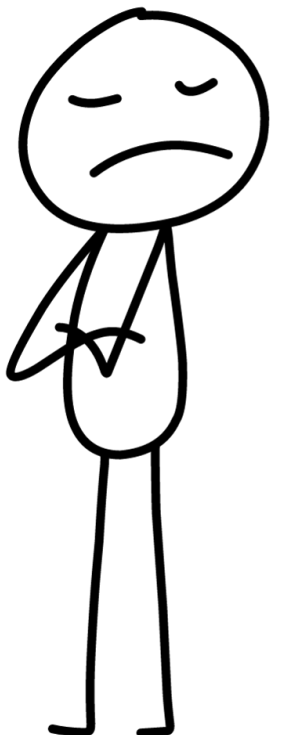
4

chtěla jsem ubytování blízko školy a za přijatelnou cenu
ubytování se nacházelo 3 minuty chůze od školy
vše potřebné

1000Kč/1000\$R

number of points that applicants with the highest

SELECTION OF STUDY ABROAD DESTINATION



General Considerations

- The exchange program
- Students must be in the application period
- Students who are not in the VSE and take part in the program except for the application period
 - Due to the limited number of spots
 - Students who want to study abroad
- The exchange program is limited to 12 months
- Applicants must apply by the deadline
- Prior to the application, students must have completed 30 ECTS credits
- Students can apply for a preferred semester afterwards.
- The selection of a preferred semester is based on the number of points that applicants achieve in the actual application round (spots - 79.4 number of points, then stepwise to applicants with lower number of points).

Other special requirements

Language of study: English
 Study program: Management
 Main source of funding: MCI

Other special requirements: English language requirements, MCI grant funds, the so called other resources

Departure

Departure date: 1.10.2023

1. Basic Data

Language of study: English
 Study program: Management
 Main source of funding: MCI

Cost Of Living - Property Prices

Health Care > Index by City (Current)
 Quality Of Life > Property Prices

NUMBEO

List of prices in Zurich as of Nov 2023.

Current Health Care Index

These data are updated regularly

Google

mci innsbruck

henning larsen architects | **management** | **management center** | **mci campus** | **architecture** | **international business** | **innsbruck**

PHD Management Center Innsbruck

MCI International | MCI Innsbruck

Wikimedia Commons
 File:MCI Innsbruck (Management Center Innsbruck) - Free-Apply.com

Study in Austria
 Management Center Innsbruck | ... applicants with the highest

Free-Apply.com
 MCI Management Center Innsbruck - Free-Apply.com

ArchDaily
 Henning Larsen Design

UBI
 Mana

Rank

Rank	City
1	Taipei, Taiwan
2	Chiang Mai, Thailand
3	Seoul, South Korea
4	Rotterdam, Netherlands
5	The Hague (Den Haag), Netherlands
6	Madrid, Spain
7	Valencia, Spain
8	Porto, Portugal

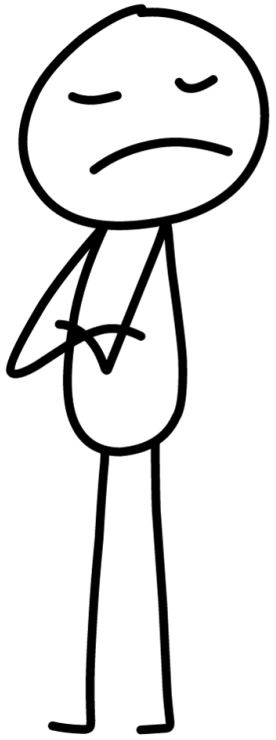
MCI
 The MCI | MCI Innsbruck

147.7
 147.2
 145.5

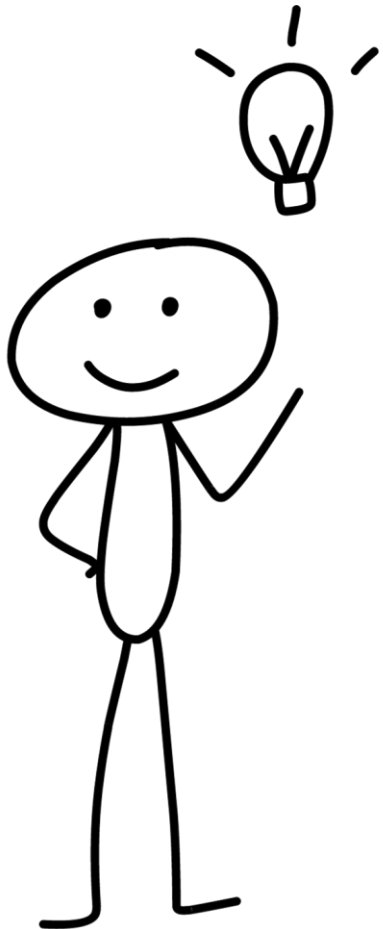
SELECTION OF STUDY ABROAD DESTINATION



- ✗ Fragmentation of data
- ✗ Time
- ✗ User discomfort

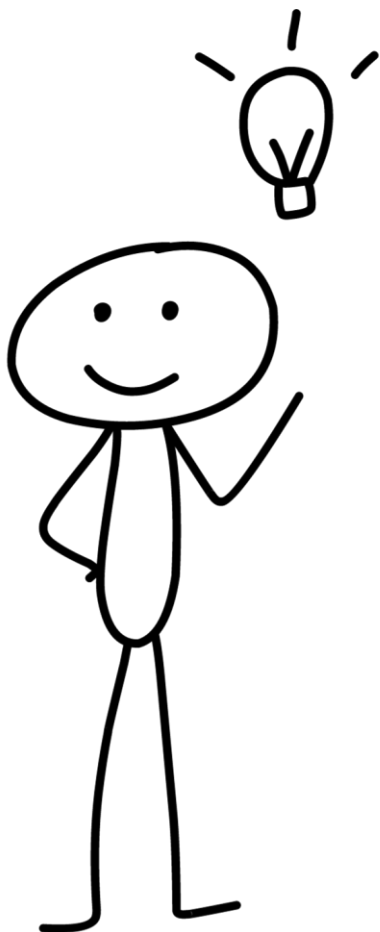


FUTURE SOLUTION



VŠE ERASMUS PICKER

ERASMUS PICKER



VSE ERASMUS PICKER CZ EN

Welcome to the VSE International Office app, which was created by the Prague University of Economics and Business' students. The aim of this app is to simplify the selection of universities for an exchange semester abroad. Good luck with your choice!

Schedule

	Bachelor 2nd	Bachelor 3rd/4th	Master
Event	Date		
Information meeting for interested students	7. 12. 2023, 14:30 (RB 435) - in English		
Online application (InSIS)	12.–21. 2. 2024, 15:00		
Language test (English) - for students without a verifiable B2	30. 11. 2023, 12:45 (SB M15) 11. 1. 2024, 11:45 (SB M15)		
Language test (German, French , Spanish) - for students without a verifiable B2	TBA		
Results published	March 2024		
Information meeting for outgoing exchange students	March 2024		

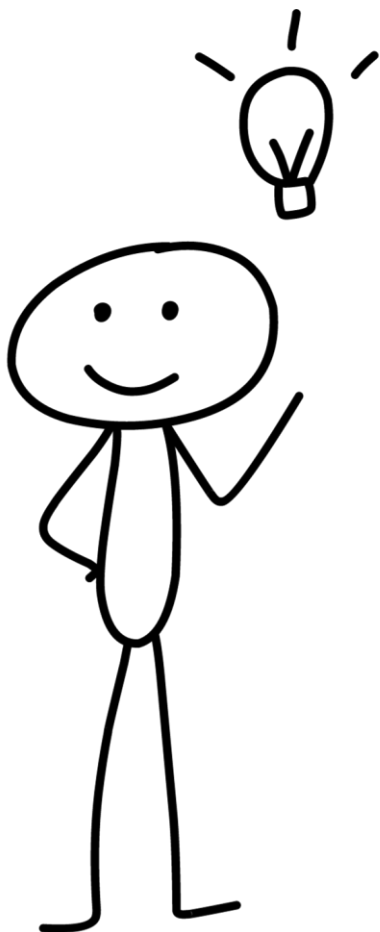
Even only one semester abroad can help you to learn a lot, mainly about yourself.
LUDMILA SINDLEROVÁ (FPH/FBA)
SYDDANSK UNIVERSITY (DK)

Contacts

If you have any questions, contact the VSE International Office at ozs@vse.cz.

f i globe **University selection** →

ERASMUS PICKER



ERASMUS PICKER

Study filters

Degree of study: Bachelor 2nd

Semester: Any semester

Study language: Vše

Fields of study: Vše

Language level: Vše

My study results: -

Geographic filters

Continent: Vše

Country: Vše

City: Vše

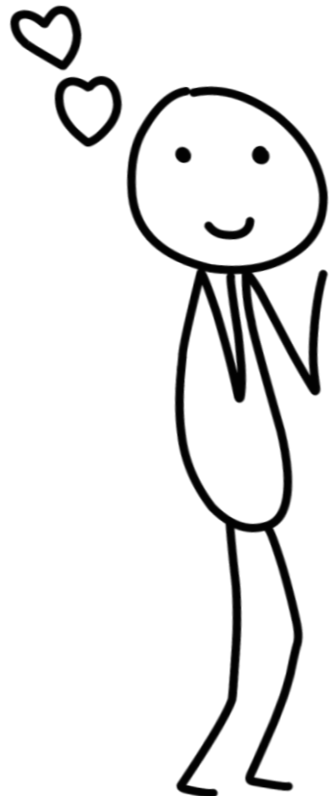
% Difference of cost of living versus Prague: -52 % (Cheapest) to 66 % (Costliest)

Map of Erasmus cities Filtered universities: 96

Table of universities

University	Language	Country	City	Spots	Fall semester	Spring semester	Language requirements
Aalto University /School of Business	English	Finland	Helsinki	1	Not available	Jan - May	B2 (No special)
Aalto University School of Business, Mikkeli Campus	English	Finland	Mikkeli	2	Not available	Jan - May	B2 (No special)
ADA University	English	Azerbaijan	Baku	2	Not available	Jan - May	B2 (No special)
Amsterdam University of Applied Sciences / Faculty of Business & Economics	English	Netherlands	Amsterdam	1	Not available	Feb - Jun	B2 (No special)
Audencia Business School	English	France	Nantes	3	Not available	Jan - Jun	B2 (No special)
BI Norwegian Business School	English	Norway	Oslo	3	Not available	Jan - Jun	B2 (No special)
Chinese University of Hong Kong (CUHK)	English	Hong Kong	Hong Kong	1	Not available	Jan - May	B2 (No special)
City University of Hong Kong	English	Hong Kong	Kowloon	1	Not available	Jan - May	B2 (No special)
Copenhagen Business School (CBS)	English	Denmark	Copenhagen-Frederiksberg	3	Not available	Jan - Jun	Certificates

ERASMUS PICKER



Copenhagen Business School (CBS)

Cost of living without accommodation	Detailed information	Websites
-3,0% Compared to Prague 600 EUR/month Scholarship	Degree of study: Bachelor 2nd Available spots: 3 Country: Denmark City: Copenhagen-Frederiksberg Study language: English Fields of study: Business, Communication, Economics, Entrepreneurship, Finance, International Business, IT, Law, Logistics, Management, Marketing Study average: 1,00 - 2,20 Language requirements: TOEFL (iBT): 91 / IELTS: 7 / CAE: Pass / CPE: Pass Fall semester: Not available Spring semester: Jan - Jun Students reviews link: ↗ Coordinator contact: ↗ Additional information: ↗	Courses Important info • Exchange students
Safety index		
+4,0% Compared to Prague Value: 78,0 Prague: 75,0		
Health care index		
+14,9% Compared to Prague Value: 85,0 Prague: 74,0		

Sources: <https://www.numbeo.com/>

Poster or photo of the university →

Application via INSIS →

TECHNICAL SPECIFICATION



Information from multiple sources



Data transformation via Snowflake



Presentation in Power BI

ADVANTAGES



- ✓ Quick results – from hours to minutes
- ✓ Clear and user-friendly
- ✓ All important information in one place
- ✓ Free
- ✓ Open for public – university promotion

DISADVANTAGES



- ✘ Misleading data (e.g. Numbeo: cost of living index)
- ✘ No real-time updates (timeschedule, upon request)
- ✘ No responsivity on mobile devices

TIMELINE AND IMPLEMENTATION PLAN



Project introduction
by the student team

**May
2023**



May / June 2023

26.6.
2023



28.6.
2023



summer 2023



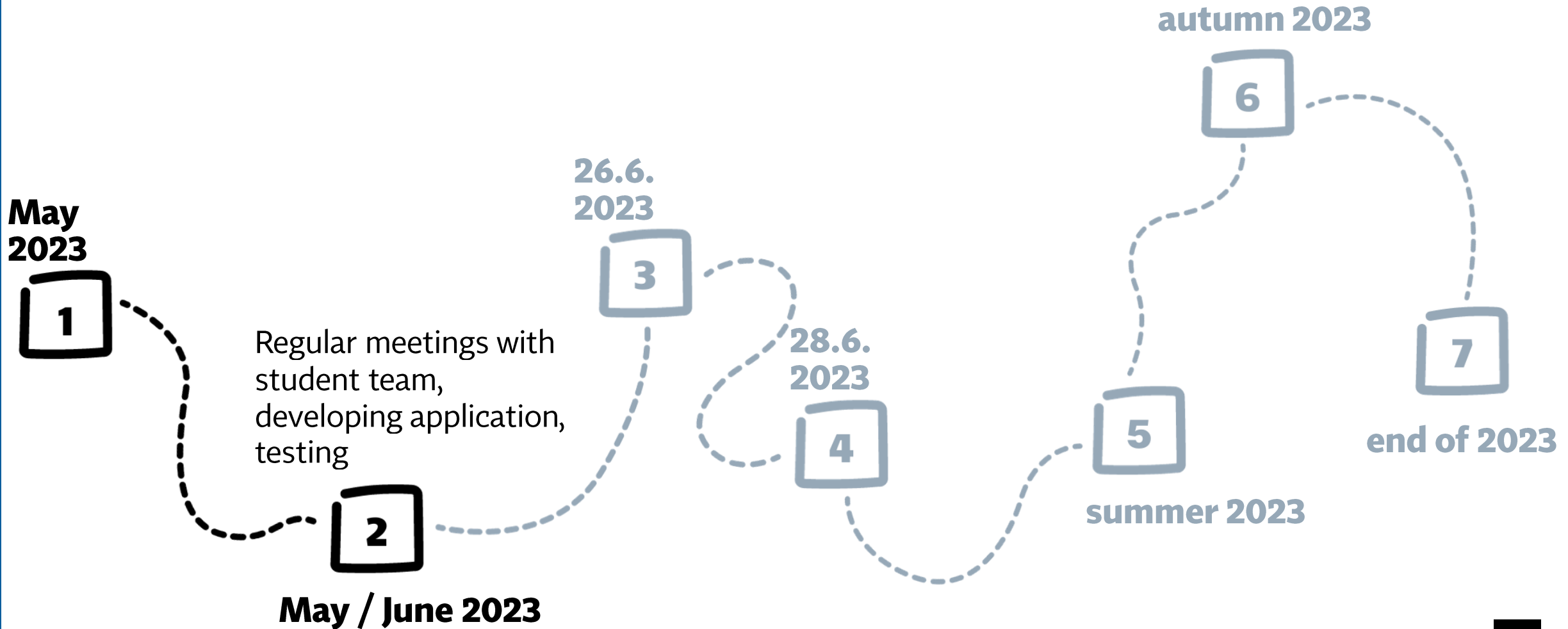
autumn 2023



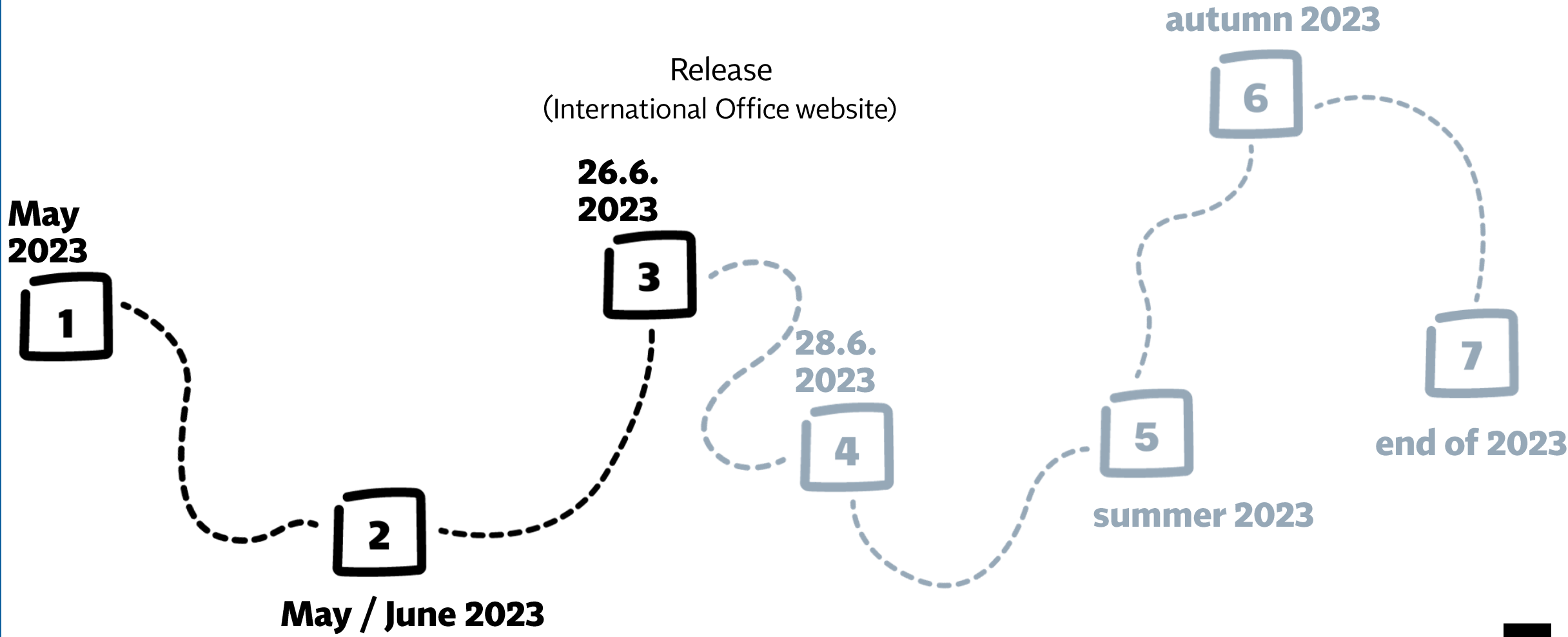
end of 2023



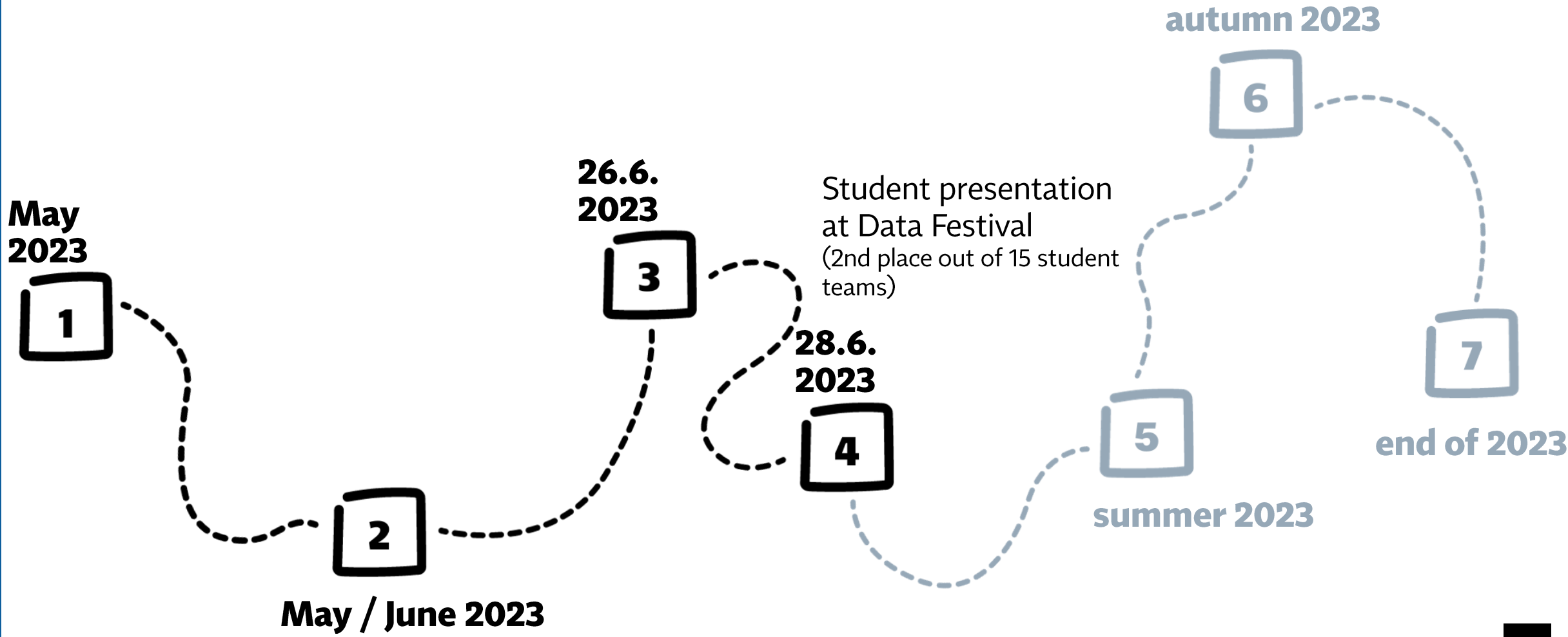
TIMELINE AND IMPLEMENTATION PLAN



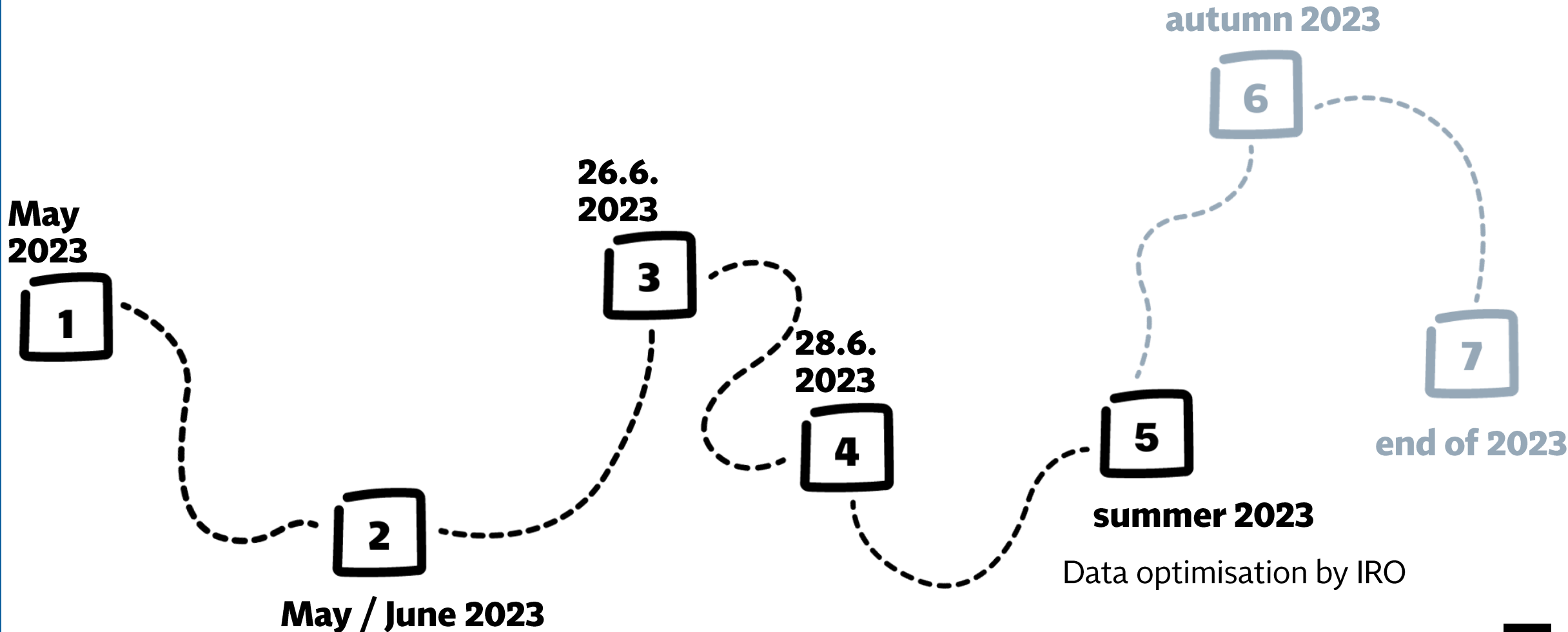
TIMELINE AND IMPLEMENTATION PLAN



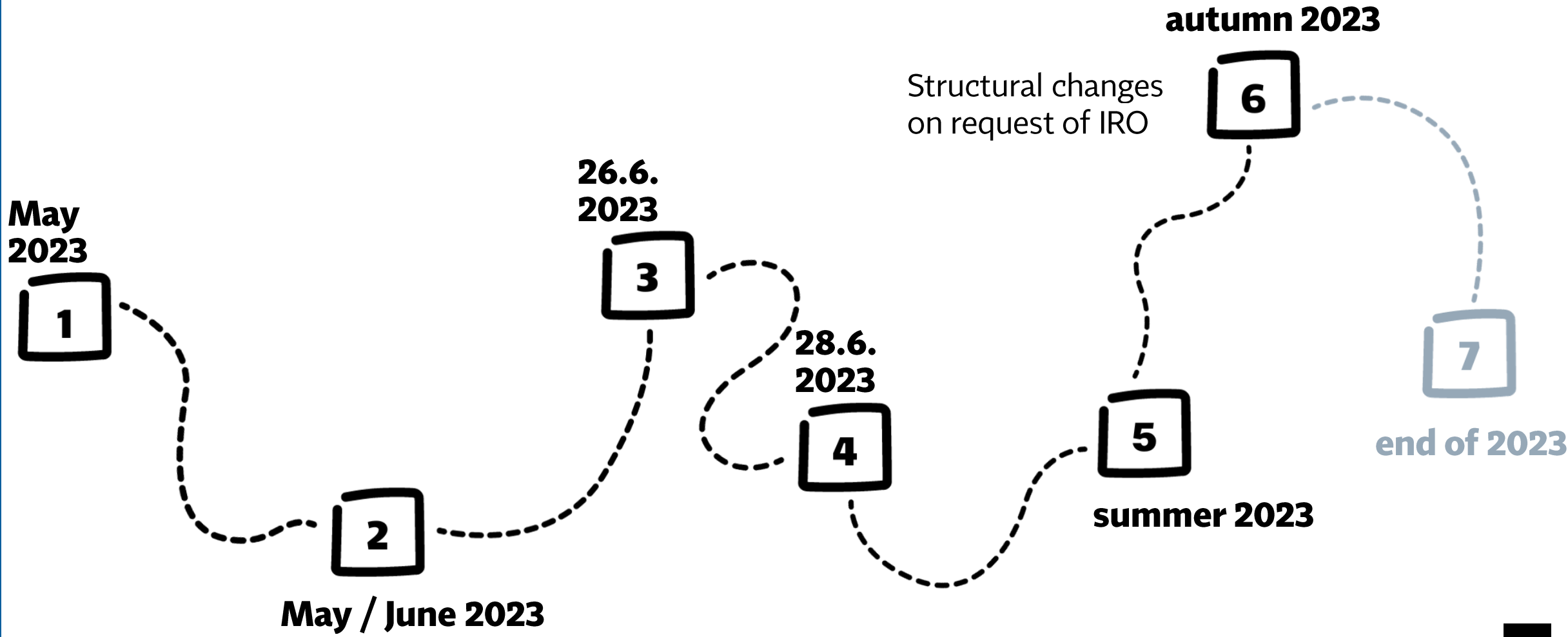
TIMELINE AND IMPLEMENTATION PLAN



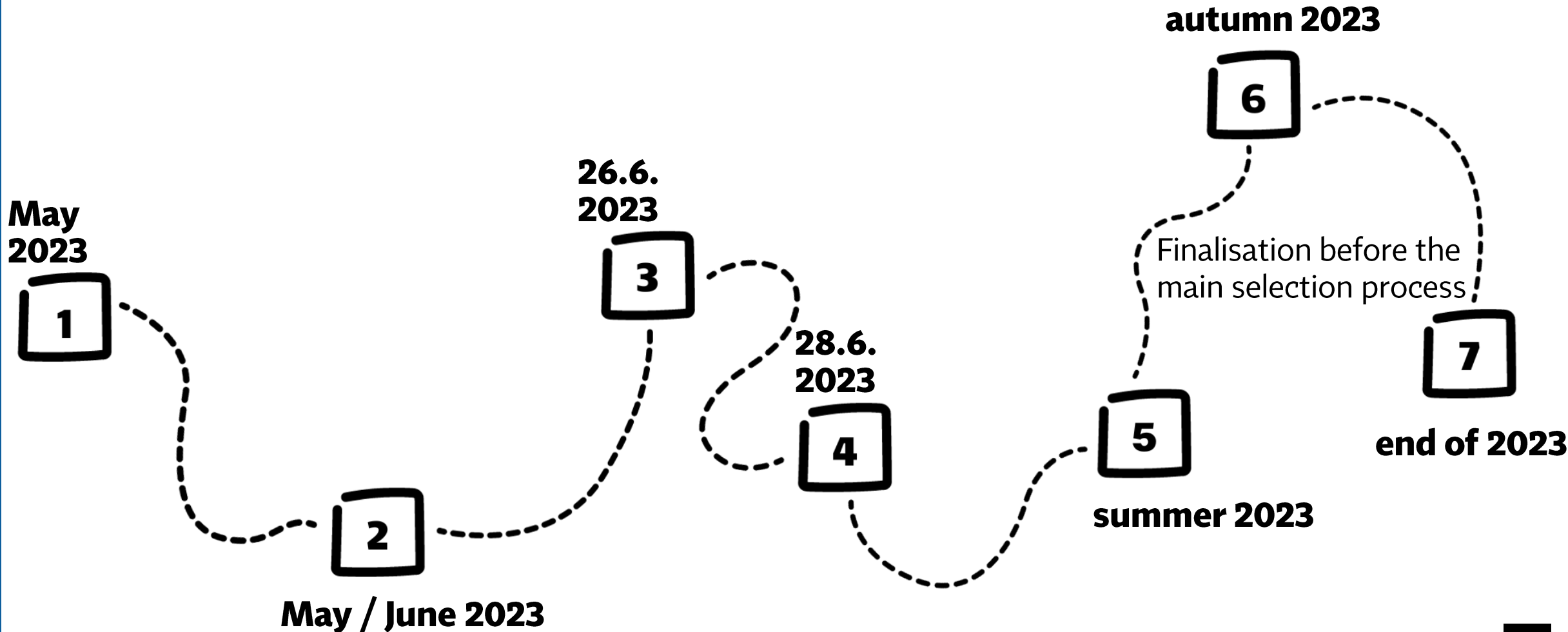
TIMELINE AND IMPLEMENTATION PLAN



TIMELINE AND IMPLEMENTATION PLAN



TIMELINE AND IMPLEMENTATION PLAN



ERASMUS PICKER – The Right Way to Your Dream Destination for Studying Abroad?



from students to students

